

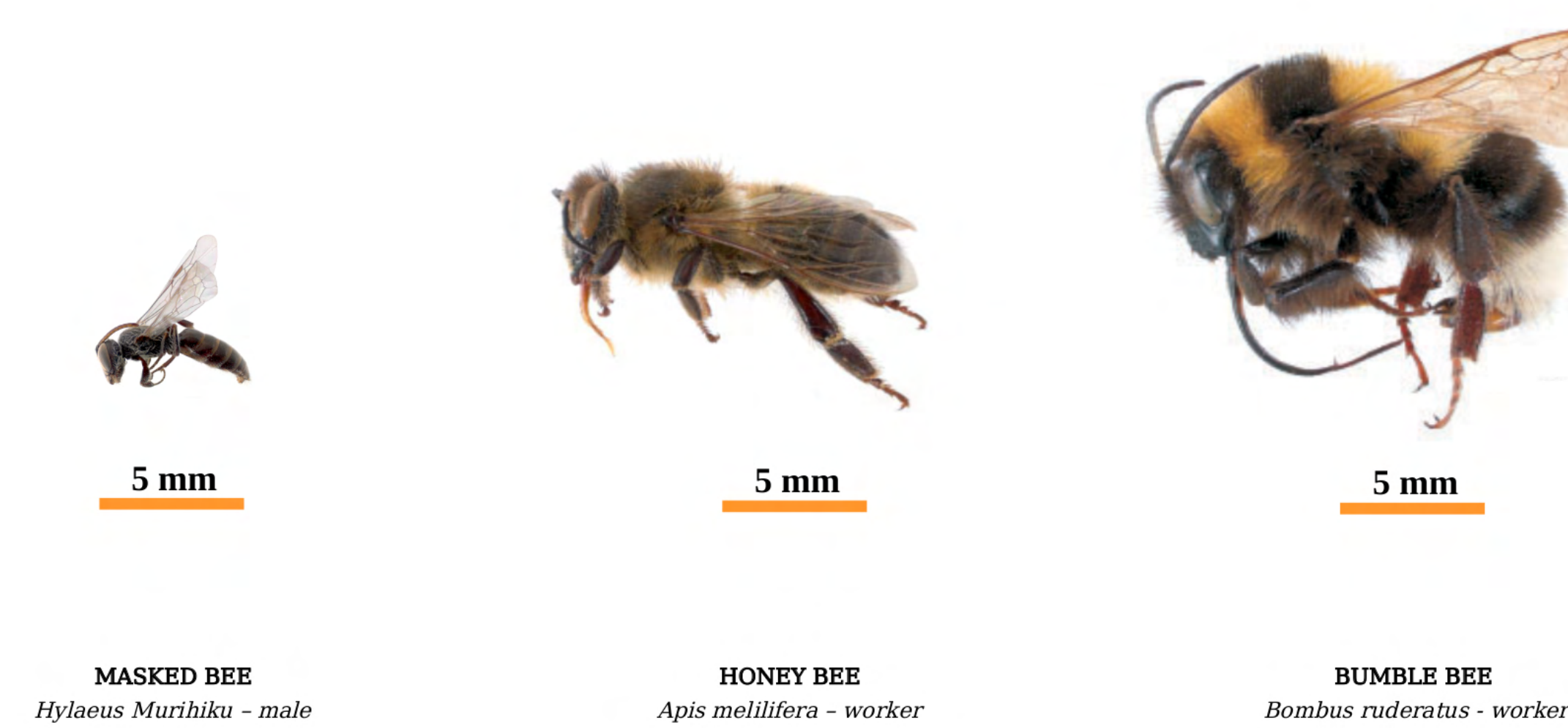
Ngaro huruhuru o Aotearoa

Native bees of New Zealand

Hairy bees



Scale



Quick facts

- NZ has around 18 species of native bees from the genus *Leioproctus*.
- Each type has their own unique characteristics, but they are all fluffy and so they are commonly called hairy bees (or plasterer bees).
- Mother bees make their nests underground, constructing special nest chambers for baby bees. Sometimes thousands of bees nest alongside each other.
- During the winter months hairy bees they live as baby *bee-grubs* inside their nests and they emerge as fully grown adults in the summer.
- *Leioproctus* carry pollen on their hairy legs. They really love native plants such as Mānuka, Kānuka or Pōhutukawa