

# Ngaro huruhuru o Aotearoa

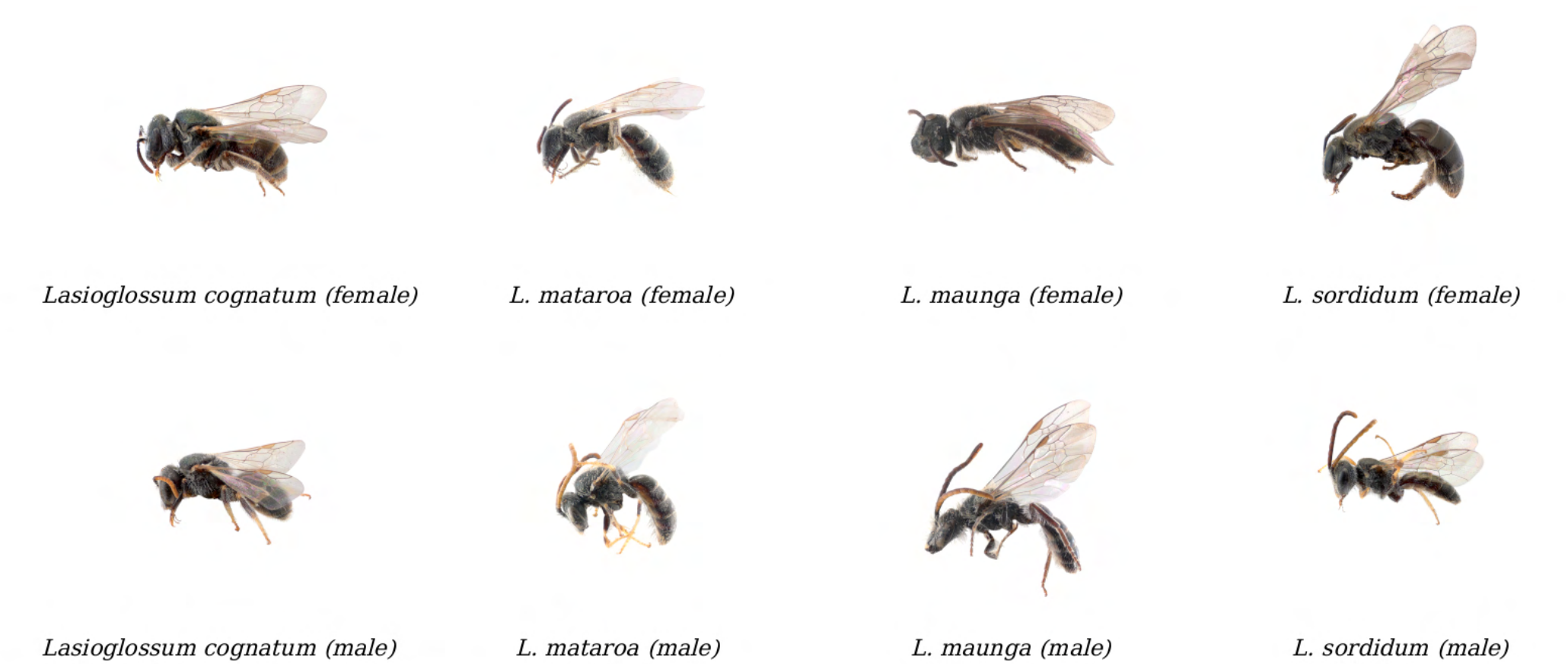
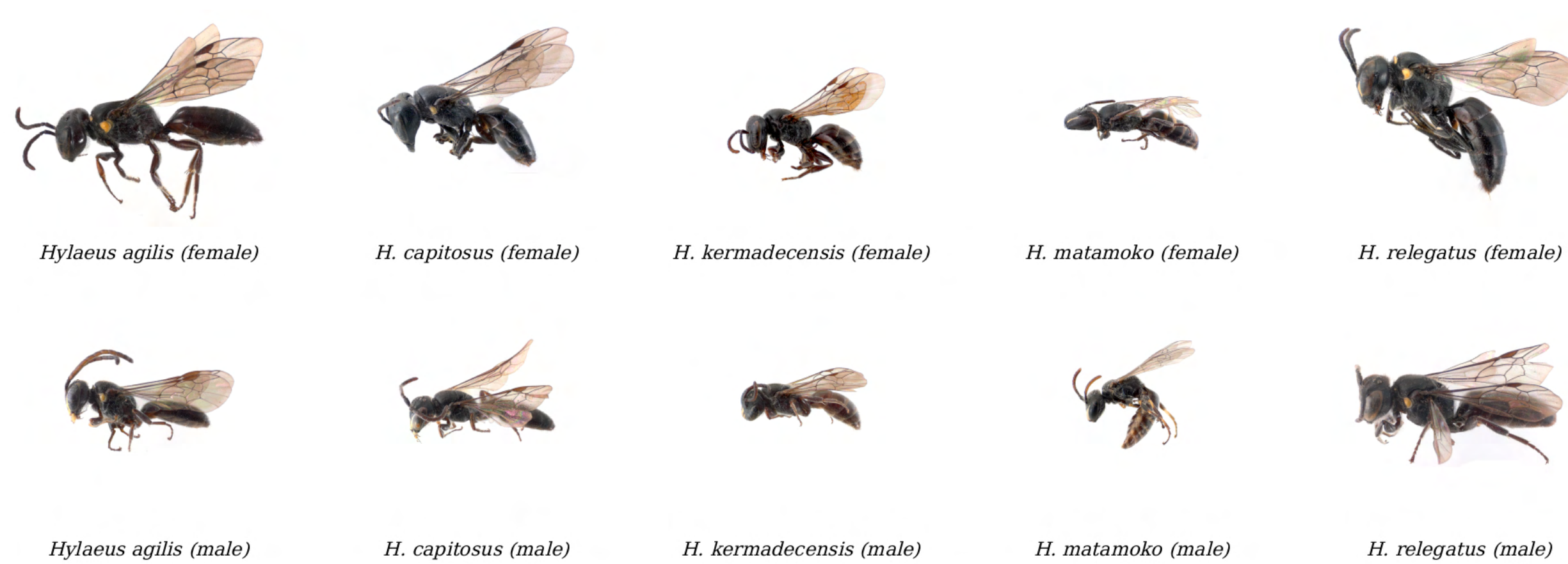
## Native bees of New Zealand

### Hairy bees



### Masked bees

### Sweat bees



E hoa mā, kia āta poipoi i tā tātou ngaro huruhuru - Friends, let's carefully nurture our native bees!

Did you know that native bees have a long evolutionary history with native plants? These complex relationships are founded on kaitiakitanga and mana. The mauri of native trees, forests and ecosystems, depends on pollination from native bees, therefore they have enduring mana whenua. There are around 28 different species of native bees in Aotearoa. Hairy colletids (plasterer bees) from the genus *Leioproctus* are the largest group with around 18 described species. Followed by masked bees from the genus *Hylaeus* with 6 species, and sweat bees from the genus *Lasioglossum* with 4 species.

### Scale

